

AO₂₀₀

Automatic Dispenser
Piston Pump
Simultaneous Dispensing



- ➔ Net efficiency: 200ml/min × 5
- ➔ Minimum shot: 1/384Y(0.077ml)

● Manual Can Table Version

SANTINT · HOLLAND

Add: Lageweg 35 - J, 2222 AG
Katwijk The Netherlands
Email: sales@santint-europe.com

SANTINT · POLAND

Add: ul. Postepu 19. mag.5
02-676 Warszawa Polska
Email: gianni.capozzi@santint.com

SANTINT · U.S.A

Add: 2000 Bloomingdale Road,
Suite 220, Glendale Heights,
IL 60139, U.S.A
Email: frank@santint.com

SANTINT · AUSTRALIA

Add: 3 Technology Circuit
Hallam Victoria, Australia
Email: Info.AU@santint.com

SANTINT · CHINA

Add: Feilong Road, Xingyang,
Zhengzhou, China
Email: info@santint.com

AO₂₀₀ Automatic Dispenser FEATURES >>>



● Electrical Can Table Version

1

Piston Pump Simultaneous

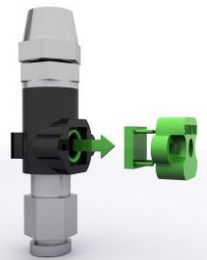
Simultaneous dispensing of 5 canisters. Calibration-free and easy maintenance.



2

Adjustable Tube Pressure Sensor

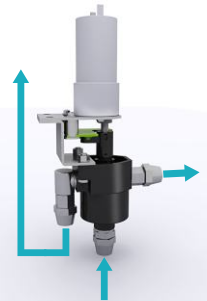
No tube explosion, longer durability; Alarm when nozzles blocked.



3

Recirculation

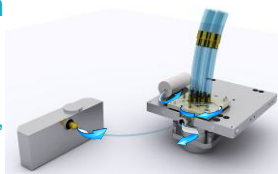
No sedimentation, drying or block in tubes, minimizing malfunction.



4

Water Circulation Humidifier

Minimizing nozzle blockage; rotary nozzle, easy to clean.



- Dispensing Type: Simultaneous
- Minimum Shot: 1/384Y(0.077ml)
- Net Efficiency: 200ml/minX5

- No. of Canisters: Up to 32
- Canister Size: 2.5L/4.5L
- Canister Material: POM

■ Flow Rate (Single Pump): 500 ml/min

■ Efficiency (Single Pump): 200ml/min

■ Dimension: 880X775X1185 (16 cans)
(WDXH) 1260X775X1185 (24 cans)
(mm) 1690X865X1305 (32 cans)

- Power: 250W
- Power Supply: 220V/110V,50Hz/60Hz

AO₂₀₀
Technical
Parameters